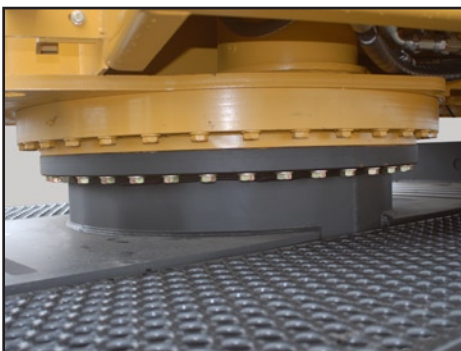




BENEFITS AND ADVANTAGES:

- **Powerful and efficient Cummins Tier III engines**
- **Choice of open centre or load sensing hydraulic system**
 - Simple open centre hydraulic system for 220D
 - Efficient, high performance hydraulic system for 234/250B
- **Heavy duty strength-to-weight optimized boom system**
 - Robust, well-protected cylinders and large diameter pins with a large wear surface
 - 234 and 250B booms are designed for heavy lifting and high duty cycle delimiting applications
- **High capacity swing system**
 - Large diameter bearing is common to all Tigercat swing machines
 - High torque starts and smooth stops
- **Excellent service access**
 - All valves are conveniently located under the walk-up platform
 - Platform access to engine service points
 - Swing-out door to access hydraulic pumps and filters
- **Large, spacious, well finished operator's station**
 - Very quiet operating environment with excellent climate control and tinted windows
 - High visibility instrumentation and engine monitoring system
- **Rigid, fabricated subframe**
 - Generously sized for excellent stability
 - The 220D can be truck or trailer mounted



Large diameter swing bearing; 234 and 250B use a closed loop swing drive for added performance and efficiency



Large pins and thick steel plate at boom pivots



234 and 250B booms resist side stresses and are well suited to heavy duty cycle delimiting applications

SPECIFICATIONS

220D

234

250B

DIMENSIONS

LENGTH less boom and steps.....	4 090 mm (161 in).....	4 825 mm (190 in).....	5 005 mm (197 in)
HEIGHT transport.....	3 430 mm (135 in).....	3 430 mm (135 in).....	3 430 mm (135 in)
WIDTH transport.....	2 590 mm (102 in).....	2 590 mm (102 in).....	2 590 mm (102 in)
WEIGHT less grapple.....	11 110 kg (24,500 lb).....	14 850 kg (32,750 lb)	16 465 kg (36,300 lb)

POWER

ENGINE.....	Cummins QSB4.5 Tier III, 119 kW (160 hp) @ 2,200 rpm N/A	Cummins QSB6.7 Tier III, 129 kW (173 hp) @ 1,800 rpm Automatic idle down	Cummins QSB6.7 Tier III, 153 kW (205 hp) @ 1,800 rpm Automatic idle down
FUEL CAPACITY.....	378 L (100 US gal)	378 L (100 US gal)	300 L (80 US gal)
COOLING.....	Aluminum side-by-side radiator, oil cooler and charge air cooler; High flow fan	Aluminum side-by-side radiator, oil cooler..... and charge air cooler; High flow fan	Aluminum side-by-side radiator, oil cooler and charge air cooler; High flow fan

HYDRAULIC SYSTEM

PUMP, MAIN.....	Gear, triple section.....	Piston.....	Piston
PUMP, SWING.....	N/A	Piston, pressure compensated.....	Piston, pressure compensated
RESERVOIR.....	175 L (46 US gal)	227 L (60 US gal)	227 L (60 US gal)
FILTRATION.....	(3) Spin-on, 7 micron full-flow.....	(4) Spin-on, 7 micron full-flow.....	(4) Spin-on, 7 micron full-flow
CYLINDER, HOIST.....	178 mm (7 in) diameter.....	165 mm (6.5 in) diameter.....	178 mm (7 in) diameter
CYLINDER, STICK.....	140 mm (5.5 in) diameter.....	140 mm (5.5 in) diameter.....	152 mm (6 in) diameter
CYLINDERS, STABILIZER.....	(4) 140 mm (5.5 in) diameter.....	(4) 165 mm (6.5 in) diameter.....	(4) 165 mm (6.5 in) diameter

SWING SYSTEM

SWING DRIVE.....	7 rpm variable, 360° continuous rotation..... N/A	9 rpm variable, 360° continuous rotation Swing priority and energy recovery.....	9 rpm variable, 360° continuous rotation Swing priority and energy recovery
SWING BEARING.....	1 190 mm (47 in) ball circle diameter..... Internal gear teeth Double reduction planetary gearbox	1 190 mm (47 in) ball circle diameter..... Internal gear teeth Double reduction planetary gearbox	1 190 mm (47 in) ball circle diameter Internal gear teeth Double reduction planetary gearbox

SUBFRAME

LENGTH less steps.....	3 890 mm (153 in).....	4 290 mm (169 in).....	4 290 mm (169 in)
Support base.....	3 580 mm x 4 550 mm (141 in x 179 in)..... Bolt-on bi-directional lock valves	3 810 mm x 4 650 mm (150 in x 183 in)..... Bolt-on bi-directional lock valves	3 810 mm x 4 650 mm (150 in x 183 in) Bolt-on bi-directional lock valves
STABILIZER PADS.....	510 mm x 710 mm (20 in x 28 in).....	585 mm x 710 mm (23 in x 28 in).....	585 mm x 710 mm (23 in x 28 in)
END FRAMES.....	Fabricated from steel plate.....	Fabricated from steel plate.....	Fabricated from steel plate
TRUCK MOUNT OFFSET.....	330 mm (13 in).....	N/A.....	N/A

BOOM

MAXIMUM REACH.....	8 430 mm (27 ft 8 in).....	9 750 mm (32 ft).....	9 750 mm (32 ft)
LIFT CAPACITY.....	10 890 kg (24,000 lb) At 3,2 m (10.5 ft)..... 4 265 kg (9,400 lb) At 7,6 m (25 ft).....	14 740 kg (32,500 lb) At 3,05 m (11 ft)..... 5 670 kg (12,500 lb) At 7,6 m (25 ft).....	15 875 kg (35,000 lb) At 3,35 m (11 ft) 6 350 kg (14,000 lb) At 7,62 m (25 ft)

ELECTRICAL

BATTERY.....	(2) 950 CCA, 12 v.....	(2) 950 CCA, 12 v.....	(2) 950 CCA, 12 v
ALTERNATOR.....	80 amp.....	80 amp.....	80 amp, 24 v
SYSTEM VOLTAGE.....	24 v.....	24 v.....	24 v
LIGHTING.....	Halogen, (2) cab mounted..... (1) service, engine house	Halogen, (2) boom mounted,..... separate cab-tire wiring to each (2) cab mounted (1) service, engine house	Halogen, (2) boom mounted, separate cab-tire wiring to each (2) cab mounted (1) service in engine house
Optional.....	(2) Halogen, boom mounted.....	N/A.....	N/A

OPERATOR CONTROLS

BOOM.....	Hydraulic joystick.....	Hydraulic joystick.....	Hydraulic joystick
SWING.....	Foot operated pilot valve.....	Foot operated pilot valve.....	Foot operated pilot valve
STABILIZERS.....	Electric switches.....	Electric switches.....	Electric switches

OTHER STANDARD EQUIPMENT

N/A	Delimber/bar saw slasher hydraulics	Delimber/bar saw slasher hydraulics
-----	-------------------------------------	-------------------------------------

OPTIONAL EQUIPMENT

Various grapple options 9,14 m (30 ft) boom HID lighting package CD stereo system; CB radio Centre mount subframe for trailer mount	Live heel; Grapple saw hydraulics Circle saw slasher hydraulics Tigercat LG4053 grapple, continuous rotation; Other grapples available HID lighting package	Live heel; Grapple saw hydraulics Tigercat LG4053 grapple, continuous rotation; Other grapples available HID lighting package
--	---	--

Excellent service access...



Platform access to the engine compartment

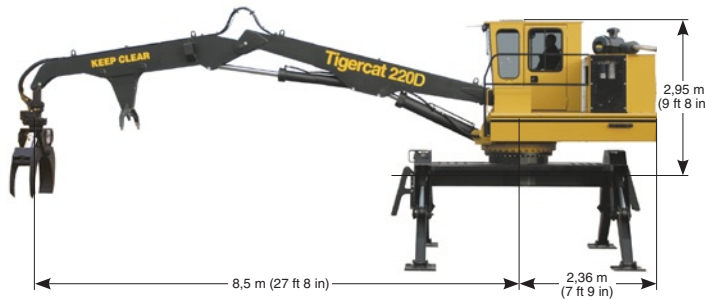


Easy access to swing drive components; integrated toolbox



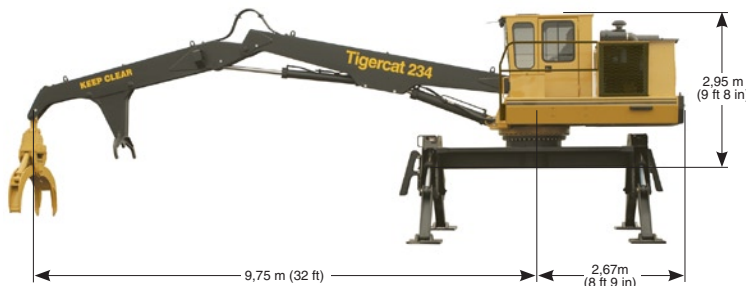
All valves are located underneath the walk-up platform

220D LOADER



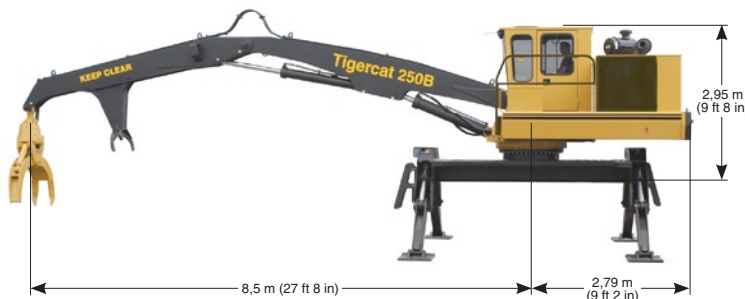
LIGHT WEIGHT YET DURABLE.
With a simple, open centre hydraulic system, the 220D is well suited to short wood and tree-length loading. The 220D can be truck or trailer mounted.

234 LOADER



FAST AND EFFICIENT.
High pressure flow-on-demand hydraulics for high performance and excellent fuel economy. The 234 is best suited to bar saw slashing and pull-through delimiting in mature softwood.

250B LOADER



HIGH PRODUCTION.
With advanced flow-on-demand hydraulics and powerful lift capacity, the 250B is ideal for high production merchandising and loading. The strong boom set handles large hardwood and the toughest pull-through delimiting applications.